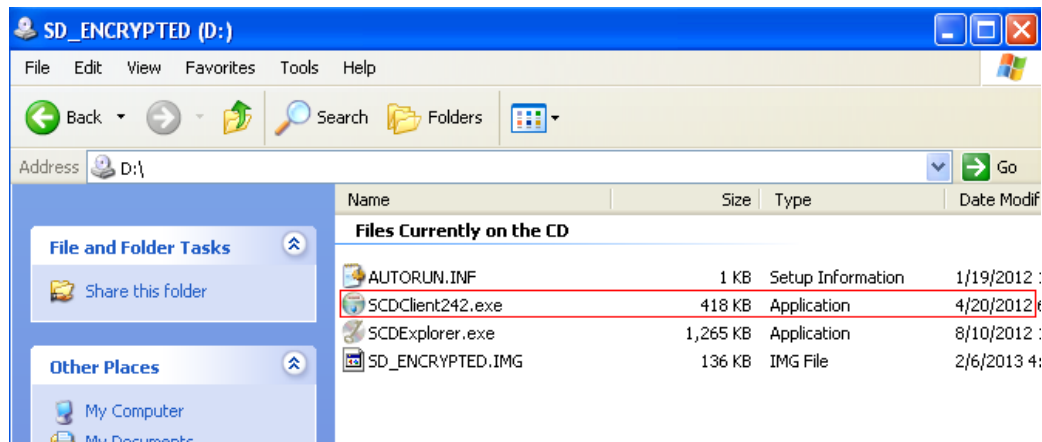


Installing SecureDisc Resident Client 2.4.2

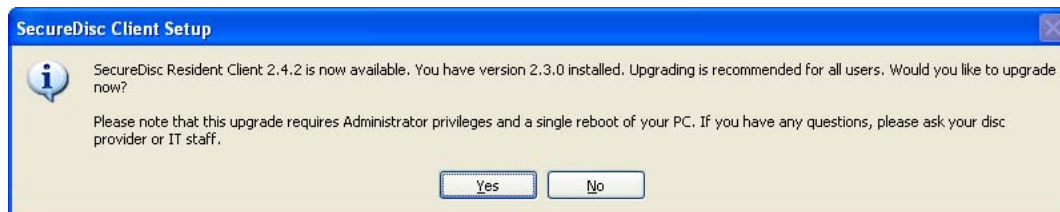
D2Xchange has updated their system and all CDs and DVDs will require a new version of SecureDisc (SecureDisc Resident Client 2.4.2). If you have an older version of SecureDisc follow the instructions below from start to finish. If you do not have SecureDisc installed on your computer, begin with step number 1 and 2, then skip to step number 7.

*Before you start the install make sure you close down all other programs because this install will require your computer to reboot.

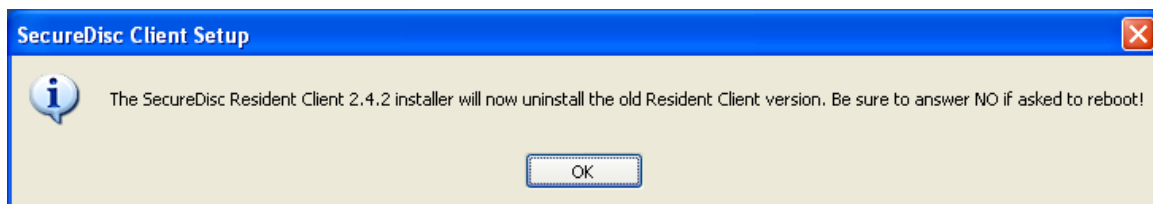
1. Insert the CD/DVD into your disc drive and double click on the CD drive on your computer.
2. Double click on SCDCClient242.exe.



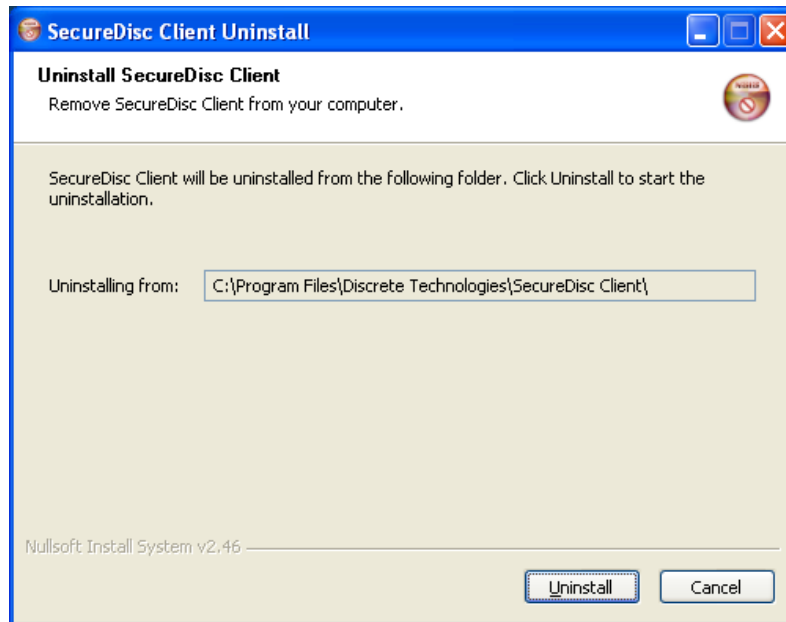
3. The notification shown below may pop up. Click Yes.



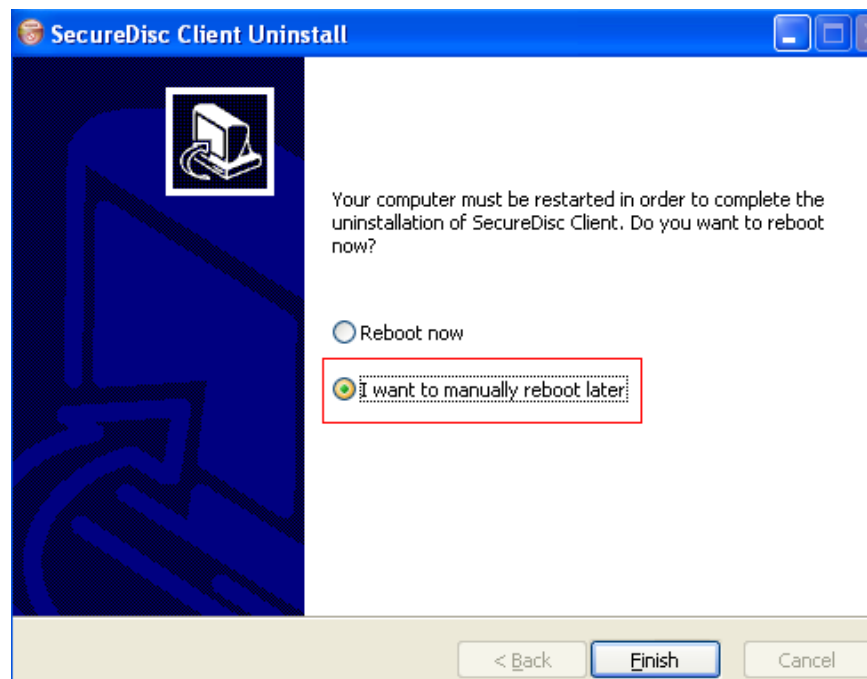
4. Another notification stating that the older version of SecureDisc is going to uninstall. Make sure NOT to reboot after uninstall. Click OK.



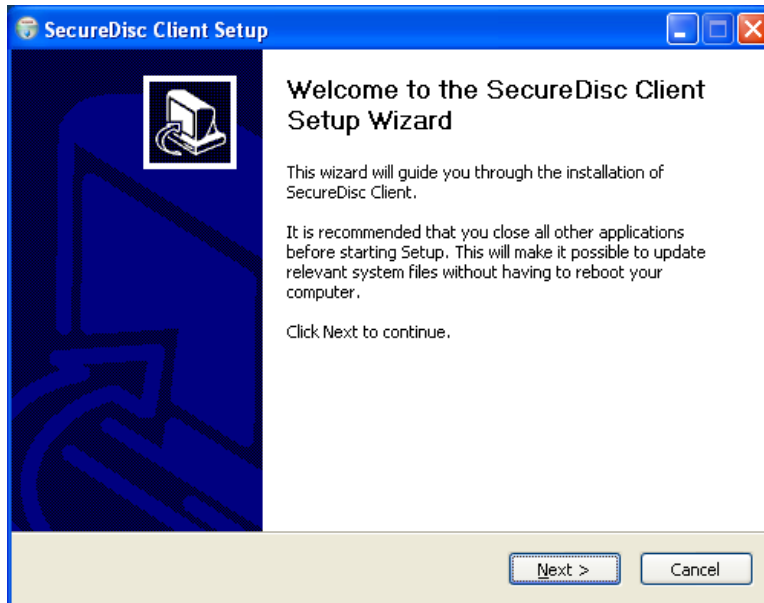
5. A prompt box will appear confirming that you want to uninstall the program. Click Uninstall.



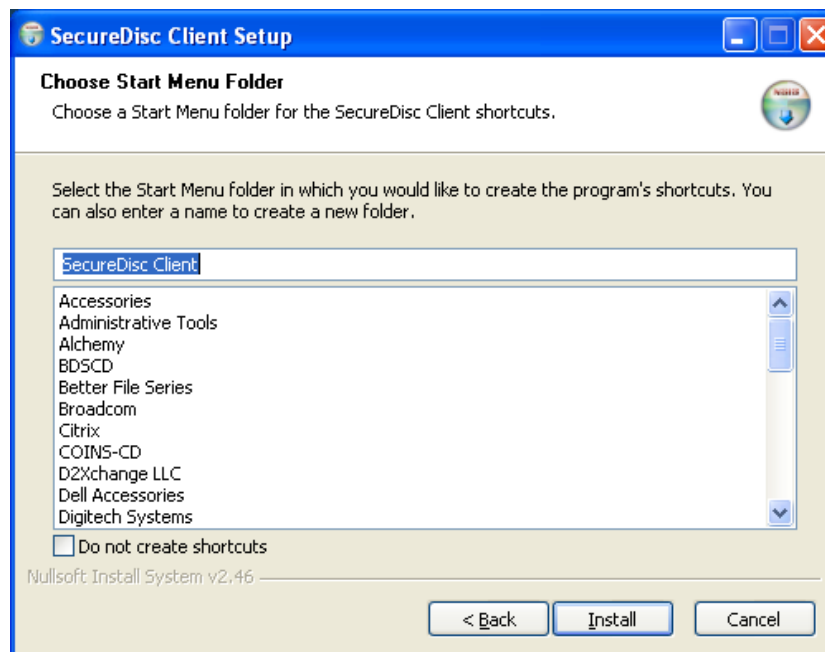
6. The program will ask if you want to Reboot now. Make sure to change it to **I want to manually reboot later**. Click Finish.



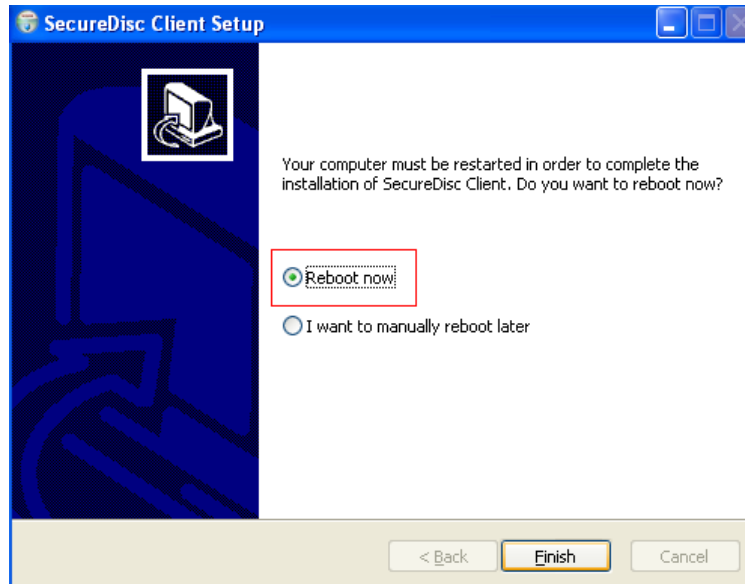
7. The SecureDisc Client Setup Wizard will appear. Click Next.



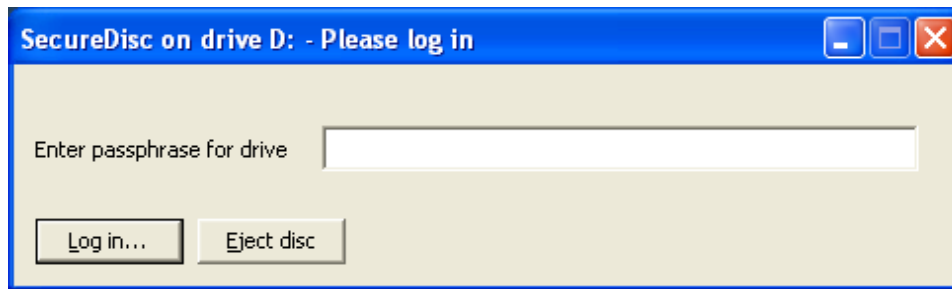
8. The next screen will ask you to choose your start menu folder. We recommend keeping the default settings and clicking Install.



9. You will then be asked if you want to reboot now. Choose Reboot now and click Finish.



10. Once your computer has restarted, SecureDisc Client will ask for the CD password.



*SecureDisc will automatically ask you for the password each time you insert an encrypted CD.